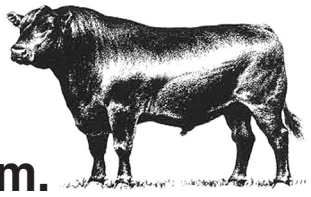


All Breeds Bull Exchange



Tuesday, May 21 • 4:00 p.m.

Opportunity for bull producers to market breeding bulls.

Bulls arrive from 12:00-3:00 p.m. on Tuesday and prior to arrival bulls must be tagged, semen tested, I.D.'d & trich tested. Consignments need to have weaning & yearling EPDs, weights & sire/dam information.

Listings:

- 10...rd angus (twos; 1500-1600#). New Direction, Lancer, & Profit Builder genetics..... Straka Red Angus (402-394-8400)
- 2....Hereford (twos). Hay fed. Line One genes..... KP Epke Ranch (Don & Jan)
- 3....blk rd angus (twos; 1350-1400#) grandsons of PCC PAW 294. Hay fed, no grain. ADG 2.5 per day..... Middle Creek (Russ Heerten 402-376-5194)
- 10...charolais (polled; yrlgs) (1100-1250) Total performance information will be available..... Odden Charolais, 605-203-1228
- 10...rd angus (yrlgs) (1200-1300) 5 sired by PIE Cinch and Crawfoot Moonshine grandsons Andrew Odden, 605-203-1775
- 10...Hereford (yearling-18 months) EPDs & wts available, commercial..... Spencer Hereford
- 3....angus (yearling), (1300) AI sired..... Fanning Angus Rn (Colby White, 307-340-0941)
- 7....rd angus (twos; 1500#) Calvo genetics, hfr bulls Pending
- 4....angus (yrlg; 12-1300) sired by Reserve & Tour of Duty, calving ease, wts available S&M Farms
- 1....angus (two & 1650) sired by Haynes Out Right, BW 82, WW 720, suitable for big hfrs ... AK Angus

Valentine Livestock Auction Company
Valentine, Nebraska



1-800-682-4874 or (402) 376-3611 • www.valentinelivestock.net

Greg Arendt, Mgr. Cell: 402-376-4703 or 402-376-4701

Greg Nielsen, Fieldman Cell: 402-389-0833 Jake Hopwood, Fieldman Cell: 308-627-4828